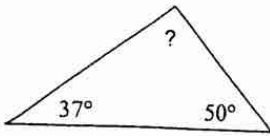


Isosceles Triangle

ID: 1

Find the measure of each angle indicated.

1)

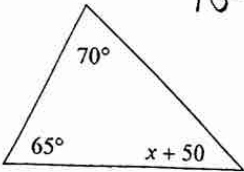


$$37 + 50 + x = 180$$

93

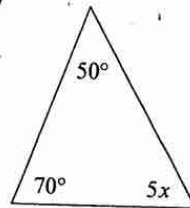
Solve for x.

2)



$$70 + 65 + 50 + x = 180$$

3)

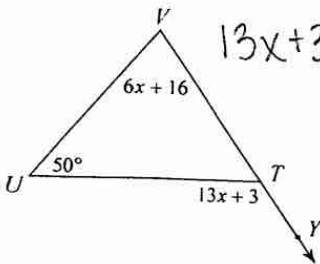


$$120 + 5x = 180$$

$$\frac{5x}{5} = \frac{60}{5}$$

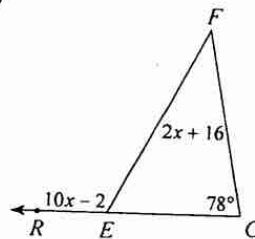
x = 12

4)



$$13x + 3 = 50 + 6x + 16$$

5)



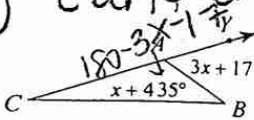
$$10x - 2 = 2x + 16 + 78 + 2$$

$$2x$$

$$8x =$$

x = 12

6) can't do

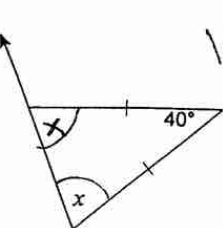


$$180 - 3x - 17 + 3x + 17 = 180$$

$$180 - (3x + 17) \Rightarrow 180 - 3x - 17 + 3x + 17 = 180$$

Find the value of x.

7)



$$140 = 2x$$

x = 70

8)



x = 100

→ O → P → A → L → E → S → C → I → N → G