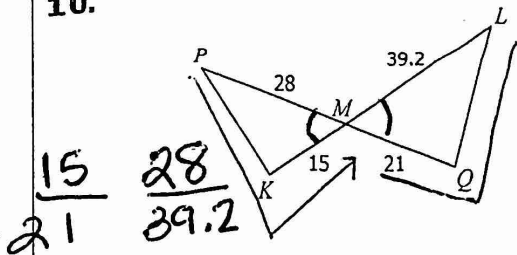


Topic 3: Proving Triangles Similar

Determine if the triangles are similar, if possible, by AA~, SSS~, or SAS~. If similar, complete the similarity statement.

10.



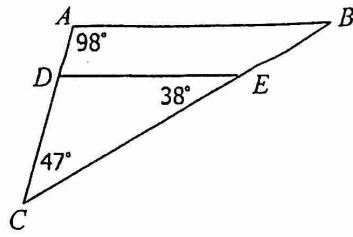
$$\frac{15}{21} \quad \frac{28}{39.2}$$

SAS~ or NOT~

Similar By: SAS~

$\triangle PKM \sim \triangle LQM$

11.

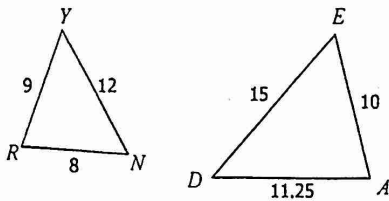


Similar By: NOT~

$\triangle CAB \sim$ _____

© Gina Wilson (All Things Algebra) 2014

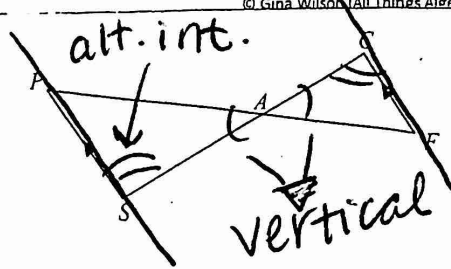
12.



Similar By: SSS~

$\triangle RYN \sim \triangle ADE$

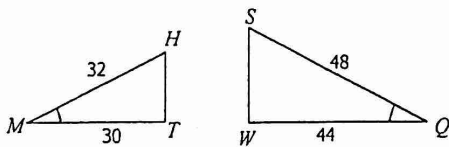
13.



Similar By: AA

$\triangle PAS \sim \triangle FAC$

14.

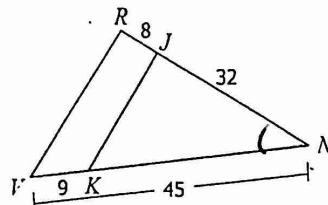


$$\frac{30}{44} \quad \frac{32}{48}$$

Similar By: NO

$\triangle MTH \sim$ _____

15.



$$\frac{32}{40} \quad \frac{30}{45}$$

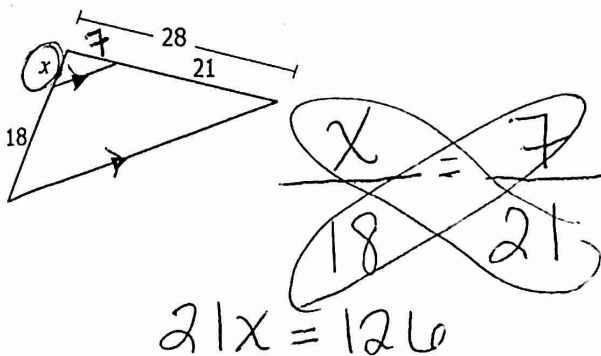
Similar By: SAS~

$\triangle JKN \sim \triangle RVN$

Topic 4: Parallel Lines & Proportional Parts

Directions: Solve for x.

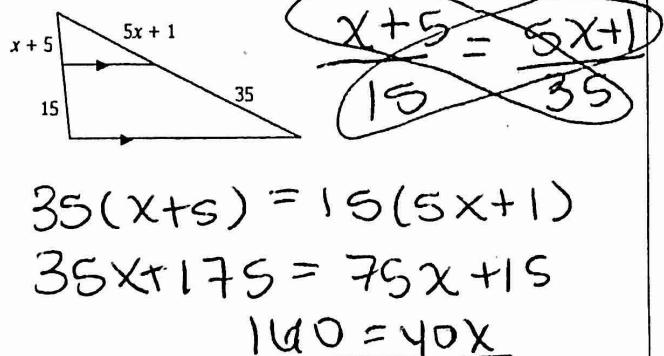
16.



$$21x = 126$$

$$x = 6$$

17.



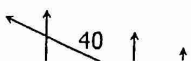
$$35(x+5) = 15(5x+1)$$

$$35x + 175 = 75x + 15$$

$$160 = 40x$$

$$x = 4$$

18.



$$x = 6$$

19.



$$x = 4$$